



TRENTON SYSTEMS

High-Performance
Computers

TRC4007

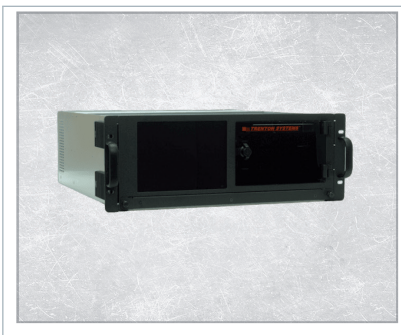


4U HEIGHT - 20" DEPTH - INDUSTRIAL CHASSIS

Accommodates up to sixteen hot swap, front-access storage drives

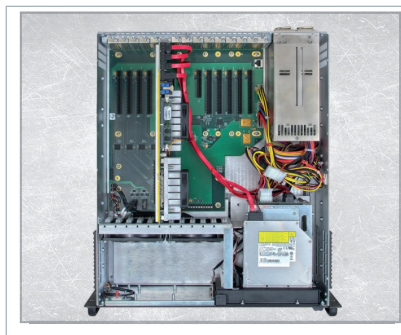
Like all of our rugged customer-driven computing solutions, the TRC4007 is designed, integrated and supported by Trenton Systems in the United States. Our exclusive 5-year factory warranty on the SBC and backplane or the Trenton-built embedded motherboard options comes standard with this industrial rackmount computer. The 20" enclosure depth, along with the built-in 8.4" LCD display (800 x 600) with optional touchscreen, and the integrated keyboard/mouse tray, saves a lot of space in many situations.

PRODUCT DETAILS



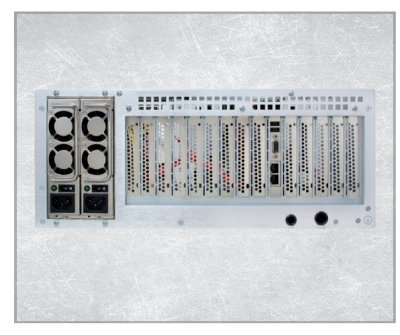
Lightweight Construction

The TRC4007 features a chassis constructed with lightweight aluminum. As low as 35 pounds.



Single or Dual Processor

Single-processor & dual-processor single board computer options available.



LCD Display Optional

14-slot Passive backplane with 8.5" TFT LCD display and integrated keyboard/mouse tray.



www.trentonsystems.com

Visit our website for more info.

Phone: (770) 287-3100

Email: sales@trentonsystems.com

Model Number

TRC4007

Board Type

Single Board Computer

Environmental**Temperature:** -10° C to 50° C (operating) and -40° C to 70° (storage)**Humidity:** 5% to 90% non-condensing**Video**

1 Integrated Video Display – 8.4" TFT LCD, Active Display Area: 170.4 mm (H) x 127.8mm (V), Resolution: 800 x 600 pixels RGB, Protective acrylic faceplate seals and protects display

Touchscreen

The optional touchscreen available with the TRC4007 uses the latest in Projected Capacitive Touchscreen (PCT) technology. The TRC4007's USB-driven touchscreen controller supports multi-touch operation for up to ten fingers and right-mouse button emulation.

Power Supply

Options include: Fixed ATX/EPS up to 1500W – OR – Redundant up to 800W P/S

System Fan Control

The FSC1400 simultaneously controls and monitors tach pulses from up to four system fans. The controller also accepts fan speed commands (including on/off) and provides individual pass/fail fan status via an I2C interface to the computer's PICMG 1.3 system host board. Fan speed can also be based on temperature via the provided thermal sensor.

Select motherboard options for the TRC4007 may have system fan control capability built onto the motherboard. These motherboards may not require the FSC1400.

See the FSC1400 System Fan Speed Controller datasheet for additional details on system fan control operation.

Hold Down Bar

Flexible hold down bar for the SHB/SBCs and the option cards for added security in high vibration environments

Cooling

2 – 120mm Fans (center-mounted), 90 CFM each

2 – Side access system filters for cleaning and maintenance

Dimensions

- 19.0" (W) x 7.0" (H) x 20.0" (D)
- 48.3cm (W) 17.8cm (H) x 50.8cm (D)
- 35.0 Lbs (15.89 Kg.) - Includes chassis + single-processor SBC + 14-slot backplane + fixed power supply only

Final system weight is a function of the specific system configuration.

